



Z8051™ Family of 8-Bit Microcontrollers

Z51F0811 Evaluation Kit

User Manual

UM024203-0312





Warning: DO NOT USE THIS PRODUCT IN LIFE SUPPORT SYSTEMS.

LIFE SUPPORT POLICY

ZILOG'S PRODUCTS ARE NOT AUTHORIZED FOR USE AS CRITICAL COMPONENTS IN LIFE SUPPORT DEVICES OR SYSTEMS WITHOUT THE EXPRESS PRIOR WRITTEN APPROVAL OF THE PRESIDENT AND GENERAL COUNSEL OF ZILOG CORPORATION.

As used herein

Life support devices or systems are devices which (a) are intended for surgical implant into the body, or (b) support or sustain life and whose failure to perform when properly used in accordance with instructions for use provided in the labeling can be reasonably expected to result in a significant injury to the user. A critical component is any component in a life support device or system whose failure to perform can be reasonably expected to cause the failure of the life support device or system or to affect its safety or effectiveness.

Document Disclaimer

©2012 Zilog, Inc. All rights reserved. Information in this publication concerning the devices, applications, or technology described is intended to suggest possible uses and may be superseded. ZILOG, INC. DOES NOT ASSUME LIABILITY FOR OR PROVIDE A REPRESENTATION OF ACCURACY OF THE INFORMATION, DEVICES, OR TECHNOLOGY DESCRIBED IN THIS DOCUMENT. ZILOG ALSO DOES NOT ASSUME LIABILITY FOR INTELLECTUAL PROPERTY INFRINGEMENT RELATED IN ANY MANNER TO USE OF INFORMATION, DEVICES, OR TECHNOLOGY DESCRIBED HEREIN OR OTHERWISE. The information contained within this document has been verified according to the general principles of electrical and mechanical engineering.

Z8051 is a trademark or registered trademark of Zilog, Inc. All other product or service names are the property of their respective owners.

Revision History

Each instance in the Revision History table below reflects a change to this document from its previous version.

Date	Revision Level	Description	Page
Mar 2012	03	Corrected formatting issue.	n/a
Mar 2012	02	Added a G to end of part number to indicate RoHS compliance; added Figure 13; changed from preliminary status.	17
Mar 2012	01	Original issue.	All

Table of Contents

Revision History	iii
List of Figures	v
List of Tables	vi
Introduction	1
Kit Contents	2
Supported Operating Systems	2
Z51F0811 Evaluation Board Block Diagram	3
Z51F0811 Evaluation Board Description	3
Install the Z8051 OCD Software and Documentation	5
Z8051 OCD Driver Installation	5
FTDI USB-to-UART Driver Installation	8
Configure the Z8051 OCD and Z51F0811 Evaluation Board	11
Build and Run the Z51F0811 Demo Project.	13
HyperTerminal Configuration	19
Sample Projects and Documentation	21
Schematic Diagrams	23
Appendix A. OCD Driver Installation on Windows Vista Systems	25
Appendix B. OCD Driver Installation on Windows 7 Systems	31
Customer Support	35

List of Figures

Figure 1.	The Z51F0811 Evaluation Kit	1
Figure 2.	Z51F0811 Evaluation Board	2
Figure 3.	Block Diagram of the Z51F0811 Evaluation Board	3
Figure 4.	An Example Setup	6
Figure 5.	The Found New Hardware Wizard Welcome Screen	7
Figure 6.	The Found New Hardware Wizard's Browse Screen	8
Figure 7.	A Successful USB-to-UART Driver Installation	9
Figure 8.	Connecting the 10-Circuit Cable to the Board	11
Figure 9.	Connecting the USB Mini-B Cable to the Board	12
Figure 10.	Initial OCD Screen	14
Figure 11.	Object File Dialog	15
Figure 12.	Configuration Dialog	16
Figure 13.	A Typical On-Chip Debugger Window	17
Figure 14.	A Typical On-Chip Debugger with Child Windows Open	18
Figure 15.	Reset & Go Toolbar Icon	18
Figure 16.	Demo Program Menu in HyperTerminal	20
Figure 17.	Z51F0811 Evaluation Board, #1 of 2	23
Figure 18.	Z51F0811 Evaluation Board, #2 of 2	24
Figure 19.	Found New Hardware Dialog, Windows Vista	25
Figure 20.	Install Device Driver Dialog, Windows Vista	26
Figure 21.	Couldn't Find Driver Dialog, Windows Vista	27
Figure 22.	Browse For Driver Dialog, Windows Vista	28
Figure 23.	Can't Verify Publisher Dialog, Windows Vista	29
Figure 24.	Successfully Installed Dialog, Windows Vista	30
Figure 25.	Install Device Driver Dialog, Windows 7	31
Figure 26.	Unsuccessful Installation, Scenario 1	32
Figure 27.	Unsuccessful Installation, Scenario 2	33
Figure 28.	Device Manager Dialog, Windows 7	34

List of Tables

Table 1.	Z51F0811000KITG Contents	2
Table 2.	Z51F0811 Evaluation Kit Sample Projects	21
Table 3.	Z51F0811 Evaluation Kit Documentation	21

Introduction

This manual describes how to set up Zilog's Z51F0811 Evaluation Kit (Zilog part number Z51F0811000KITG) and use it to evaluate your Z8051-based designs and applications.

The Kit features a small Evaluation Board consisting of four LEDs, three pushbuttons, port pin headers and a UART-to-USB port. The Board features the Z51F0811 MCU in a 32-pin QFN package, plus a DBG connector to connect the board to a host development PC using the Z8051 USB On-Chip Debugger (OCD) cable. For more details about the Z51F0811 MCU, please refer to the [Z51F0811 Product Specification \(PS0296\)](#).

This document guides you through the following tasks:

- [Install the Z8051 OCD Software and Documentation](#) – see page 5
- [Configure the Z8051 OCD and Z51F0811 Evaluation Board](#) – see page 11
- [Build and Run the Z51F0811 Demo Project](#) – see page 13

Figure 1 displays an image of the Z51F0811 Evaluation Kit.



Figure 1. The Z51F0811 Evaluation Kit

Kit Contents

Table 1 lists the contents of the Z51F0811 Evaluation Kit.

Table 1. Z51F0811000KITG Contents

Item	Description	Quantity
1	Z51F0811 Evaluation Board	1
2	Z8051 USB On-Chip Debugger (OCD)	1
3	Z8051 OCD Target Cable (10ckt)	1
4	USB Cable: A (male) to Mini-B	2
5	Z8051 OCD Software and Documentation CDROM	1
6	Z51F0811 Evaluation Kit Insert (FL0138)	1

Figure 2 displays an image of the Z51F0811 Evaluation Board.

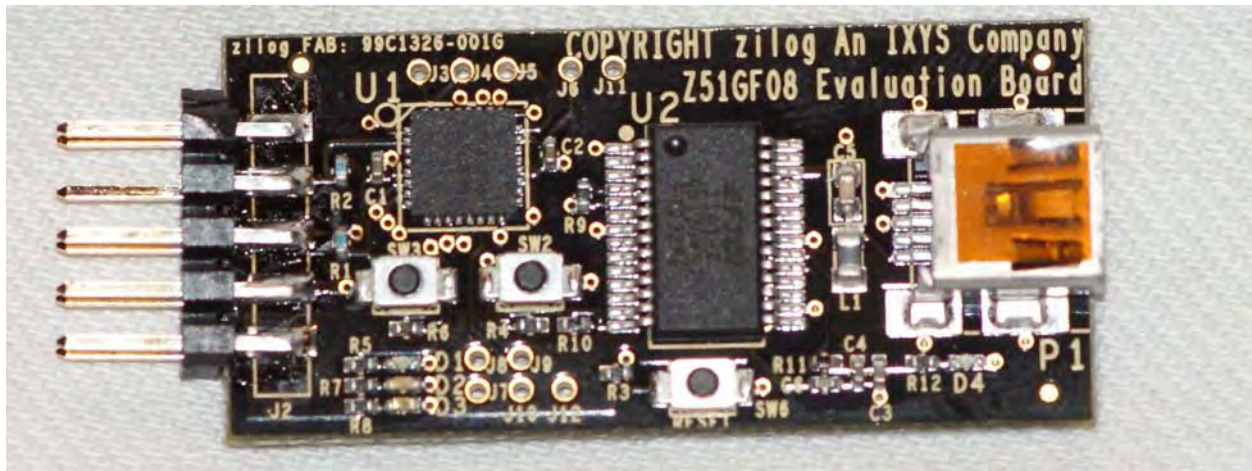


Figure 2. Z51F0811 Evaluation Board

Supported Operating Systems

The Z51F0811 Evaluation Board and the Z8051 On-Chip Debugger support the following operating systems:

- Microsoft Windows XP
- Microsoft Windows Vista (32-bit/64-bit)

- Microsoft Windows 7 (32-bit/64-bit)

Z51F0811 Evaluation Board Block Diagram

Figure 3 displays a block diagram of the Z51F0811 Evaluation Board.

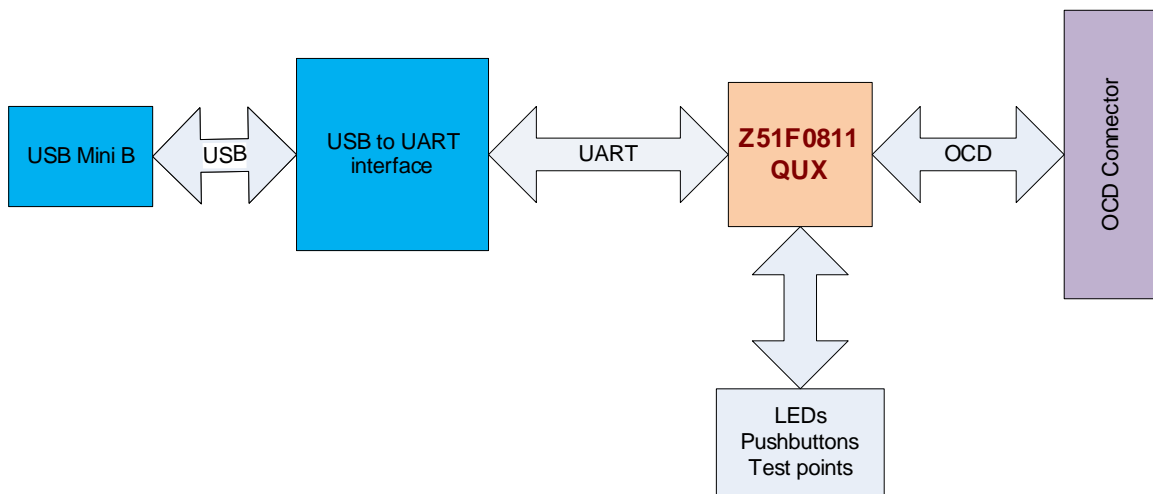


Figure 3. Block Diagram of the Z51F0811 Evaluation Board

Z51F0811 Evaluation Board Description

The Z51F0811 Evaluation Board contains the following components:

- Z51F0811: U1, 32-pin QFN chip
- 3 LEDs: green (D1), red (D2) and yellow (D3) are connected to the GPIO pins of the Z51F0811 MCU
- 1 green LED to indicate USB power: D4
- 3 pushbuttons:
 - SW1: RESET
 - SW2 and SW3 are connected to the GPIO pins on the Z51F0811 MCU
- USB connector: P1
- OCD connector: J1, J2
- USB to UART interface: U2

- USB interface provides power and communication to the Board
- Test points J11 and J12 are connected to Ground; J3–J10 are connected to GPIO pin U1

When the Board is connected to the USB port of the host PC, the green D4 LED will illuminate (turn ON).

Schematic diagrams of the Z51F0811 Evaluation Board are presented [on pages 23 through 24](#) of this document.

The physical dimensions of the Board are: 1.61" x 0.76" (40.9mm x 19.3mm).

Install the Z8051 OCD Software and Documentation

The Z8051 On-Chip Debugger (OCD) interface is the interface by which your PC will communicate with the Z51F0811 MCU to download and execute code. In addition to the OCD, software such as development tools and sample applications will be installed.

Observe the following procedure to install the Z8051 On-Chip Debugger software and documentation on your computer.

1. Ensure that the OCD interface hardware is not connected to your PC.
2. Insert the Z8051 Software and Documentation CD into your computer's CD-ROM drive. The setup program launches automatically. If the setup program does not launch automatically, open Windows Explorer, browse to your CD-ROM drive, and double-click the file labeled Z8051_<version_number>.exe.

► **Note:** In this filename, <version_number> refers to the version number of the OCD Software and Documentation release. For example, this version number may be 1.0.

3. Follow the on-screen instructions to complete the OCD software installation.

Z8051 OCD Driver Installation

The driver programs for the Z8051 On-Chip Debugger are copied during the software and documentation installation. In the following procedure for Windows XP systems, ensure that the target side of the OCD will remain unconnected while you install these drivers. Refer to Figure 4 for guidance.

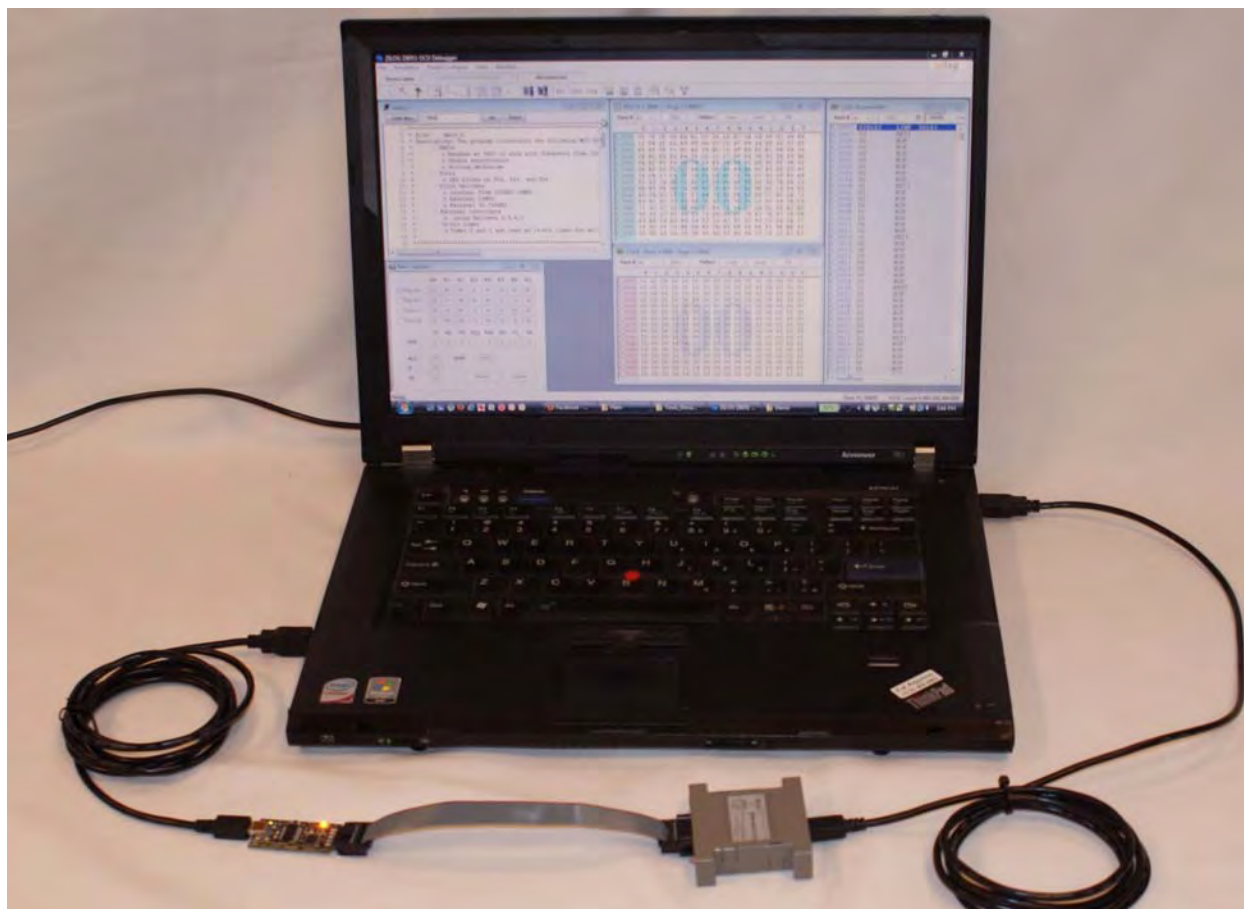


Figure 4. An Example Setup

► **Note:** If you are running Windows Vista, see [Appendix A](#) on page 25 to install your device drivers. If you are running Windows 7, see [Appendix B](#) on page 31.

1. Connect the OCD hardware to the USB port of your PC by connecting the A-Male end of one of the two USB A (male)-to-Mini-B cables with the host PC's USB port, and connect the Mini-B end to the OCD device.
2. After the PC detects the new hardware, it will display the **Found New Hardware Wizard** dialog box, shown in Figure 5. Select **Install from a list or specific location (Advanced)**; then click **Next**.



Figure 5. The Found New Hardware Wizard Welcome Screen

3. The next dialog box, shown in Figure 6, prompts you to enter a path or navigate to the directory in which the .inf file was installed. Depending on the type of computer you use (32-bit or 64-bit), use the **Browse** button to navigate to one of the following paths and click the **Next** button, leaving all other selections at their default settings.
 - On 32-bit machines, use the following path:
 <Z8051 Installation>\Z8051_<version_number>\device drivers\OCD USB\x32
 - On 64-bit machines, use the following path:
 <Z8051 Installation>\Z8051_<version_number>\device drivers\OCD USB\x64

► **Note:** On some installations, the Found New Hardware screen shown in Figure 5 may also display the text string, Zilog Z8051 USB OCD - No Firmware. This occurrence is normal and can be disregarded.

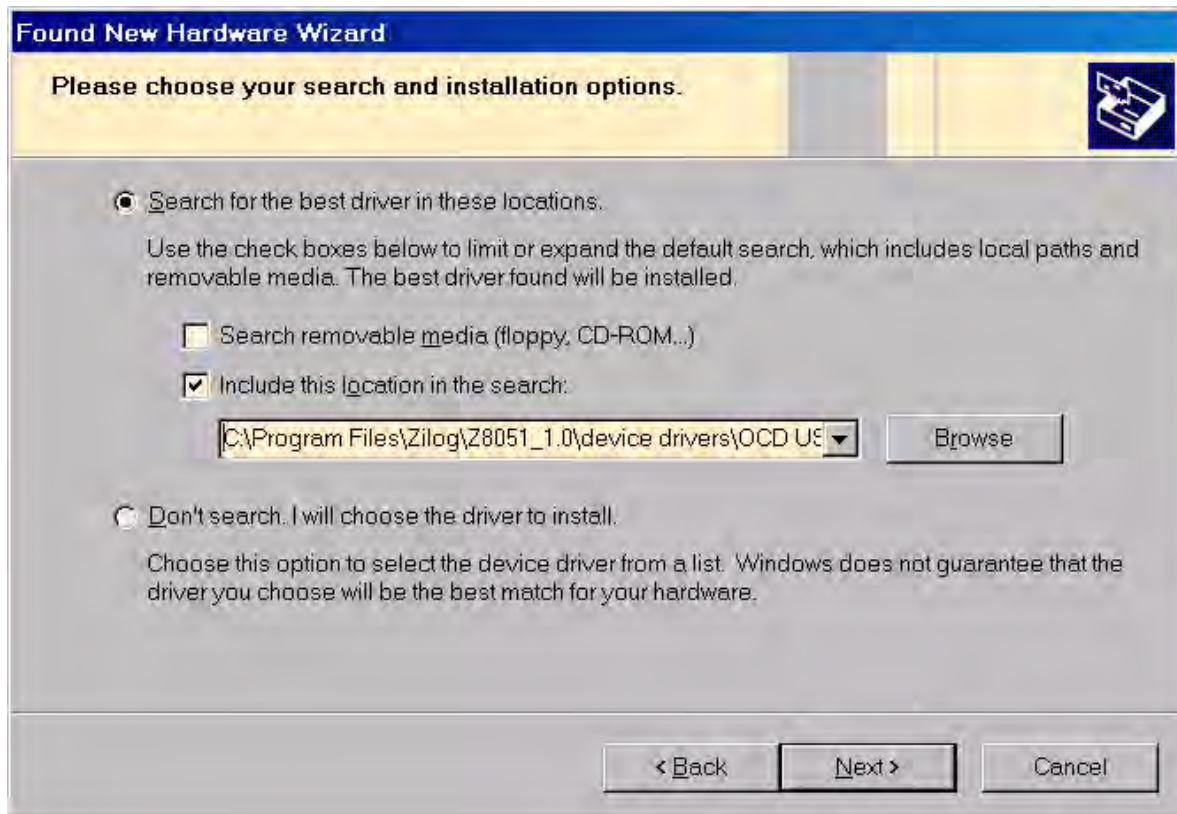


Figure 6. The Found New Hardware Wizard's Browse Screen

4. When Windows prompts you whether to continue the installation or stop, click the **Continue Anyway** button and wait until the installation is completed (Windows may prompt you more than once). When the installation is complete, click **Finish**.

FTDI USB-to-UART Driver Installation

An FTDI USB-to-UART driver is required to allow your PC to communicate through its USB port to the on-chip UART of the Z51F0811 MCU. Observe the following procedure to perform these connections.

1. Ensure that the USB cable is not plugged in to the Z51F0811 Evaluation Board's P1 connector.
2. Navigate to the following filepath and double-click the CDM20802_setup.exe file to begin the driver installation.

<Z8051 Installation>\Z8051_<version_number>\device drivers\FTDI Uart

3. The installation process will begin and you should observe output similar to the following messages on the screen of your PC:

```
32-bit OS detected  
<installation path>\dpinstx86.exe  
Installation driver  
FTDI CDM driver installation process completed.
```

4. When the installation is complete, plug in the Mini-B connector of the second USB cable into the Board, and the larger A connector into the USB port of your PC. Again, refer to [Figure 4](#) on page 6 for guidance.
5. If the driver installation was successful, the *Ports (COM & LPT)* section of the Device Manager will display *USB Serial Port (COMx)* or similar message, as highlighted in Figure 7.



Figure 7. A Successful USB-to-UART Driver Installation

► **Note:** To launch the Device Manager on Windows 7 systems, launch the Start menu, enter *device manager* in the **Search programs and files** field, and press the Enter key.

To open the Device manager on earlier Windows systems, navigate via the following path:

Start → Control Panel → System → Hardware → Device Manager → Ports (COM& LPT)

Configure the Z8051 OCD and Z51F0811 Evaluation Board

Observe the following procedure to set up and configure the Z8051 On-Chip Debugger and the Z51F0811 Board.

1. Connect the Z8051 On-Chip Debugger (OCD) to the host PC's USB port. If you haven't already performed your hardware connections, see the [Z8051 OCD Driver Installation](#) section on page 5.
2. Connect the Z8051 OCD 10-circuit cable connector to the Z51F0811 Board's J1 and J2 connectors. Pin 1 of the cable connector is indicated by a red stripe, as shown in Figure 8.

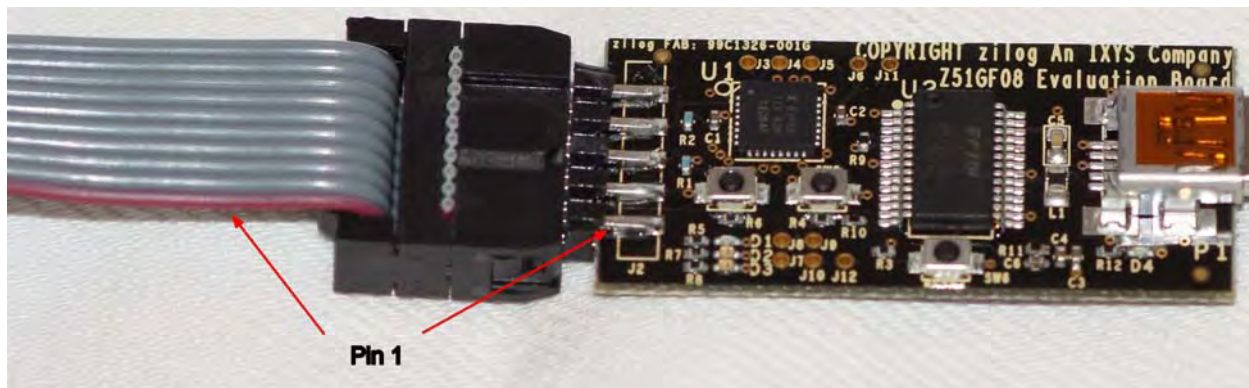


Figure 8. Connecting the 10-Circuit Cable to the Board

3. Using the second USB-to-Mini-B cable, connect the standard USB end to the host PC's USB port.
4. Connect the other end of this second Mini-B cable to the Z51F0811 Board's P1 connector to apply power to the Board. Note that the green LED D4 is ON; see Figure 9.

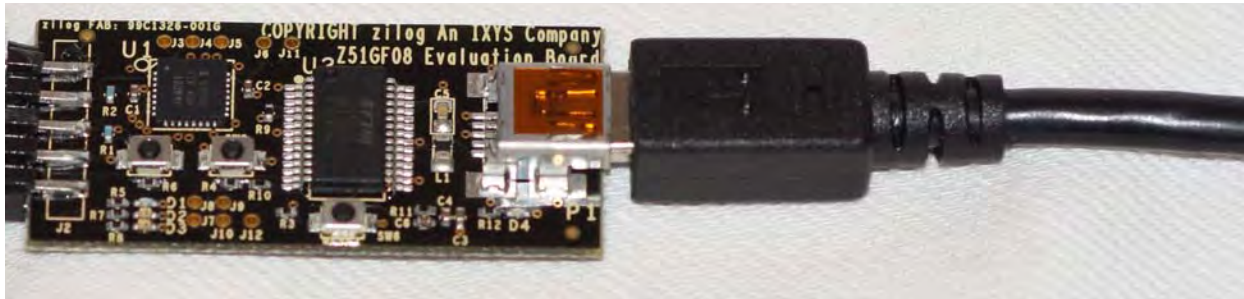


Figure 9. Connecting the USB Mini-B Cable to the Board

Build and Run the Z51F0811 Demo Project

Observe the following procedure to build and run the Z51F0811 demo project.

1. Browse to the following location and double-click the `build_sdcc.bat` batch file to build the project:

`<Z8051 Installation>\Z8051_<version_number>\samples\Z51F0811\Demo\build_sdcc.bat`

► **Note:** Refer to the [Z8051 Tools Product User Guide \(PUG0033\)](#) for additional information about these project files and Small Device C Compiler (SDCC) development tools.

2. When the build is complete, the command window will prompt the user to press any key to continue. Proceed by pressing any key on your keyboard; as a result, a hex file for the demo will be created in the following path:

`<Z8051 Installation>\Z8051_<version_number>\samples\Z51F0811\Demo\demo.hex`

3. Set up the OCD and Evaluation Board. If you have not already configured these items, please return to the [Configure the Z8051 OCD and Z51F0811 Evaluation Board](#) section on page 11.
4. Run the Z8051 OCD software. From the **Start** menu, navigate to **All Programs** → **Zilog Z8051 Software and Documentation <version_number>** → **Zilog Z8051 OCD <version_number>**. Once launched, the program will display *Connected*, as shown in Figure 10.

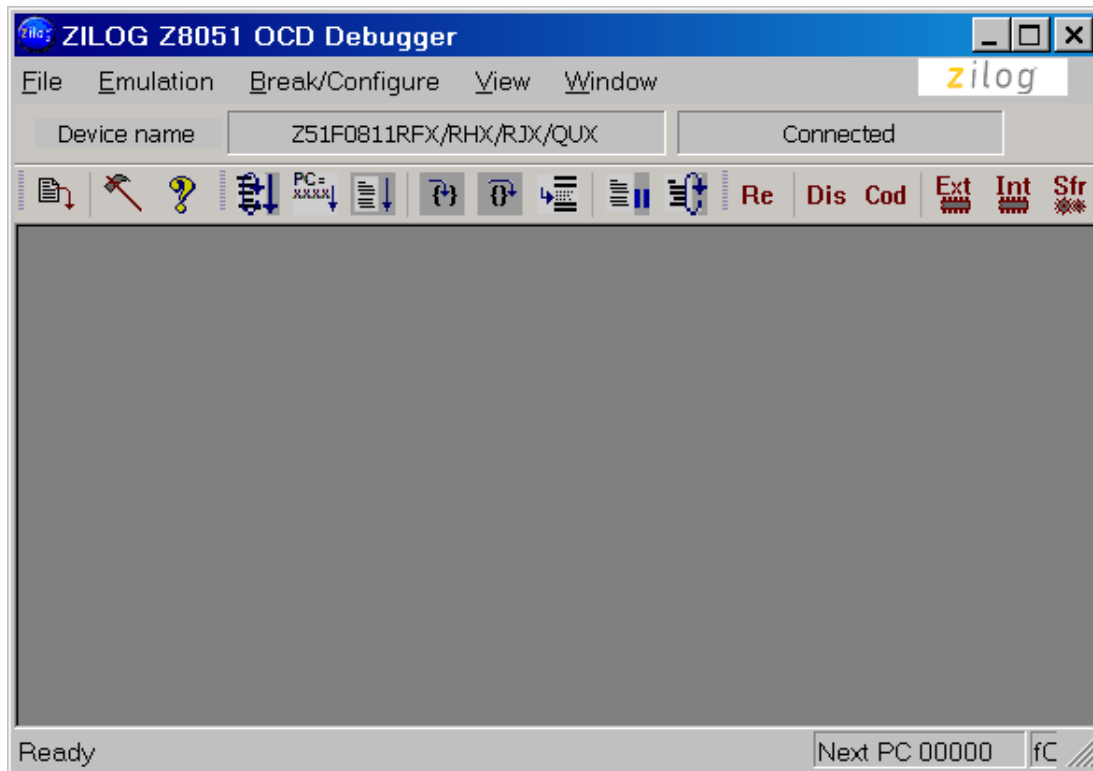


Figure 10. Initial OCD Screen

► **Note:** For a free download of the latest version of the OCD software, visit [the Zilog website](http://www.zilog.com) and navigate via the **Tools and Software** menu to **Software Downloads**.

5. In the Debugger window, select **Load Hex** from the **File** menu to display the Object File dialog, which is shown in Figure 11.

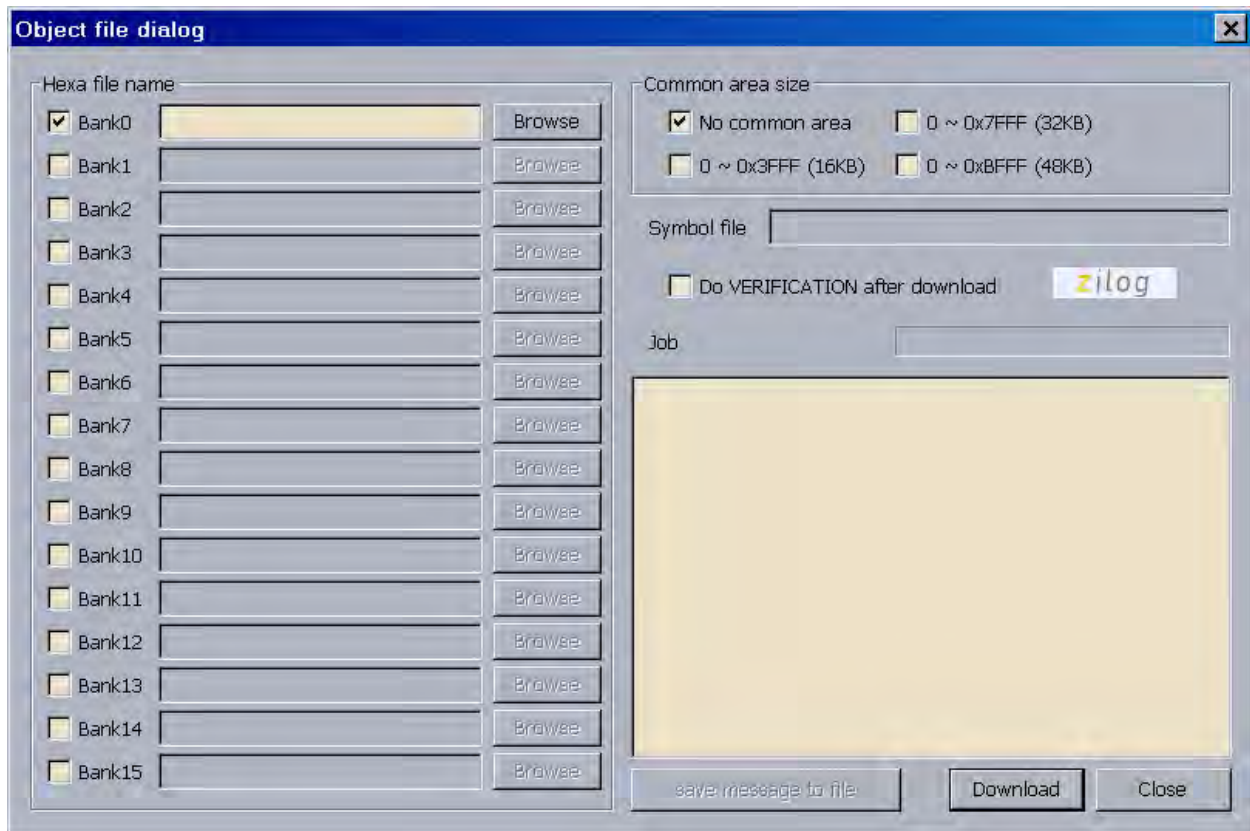


Figure 11. Object File Dialog

6. In the Object file dialog, browse to the hex file that you created in [Step 2](#) and click **Open**.
7. Click the **Download** button to open the Configuration dialog box, shown in Figure 12.

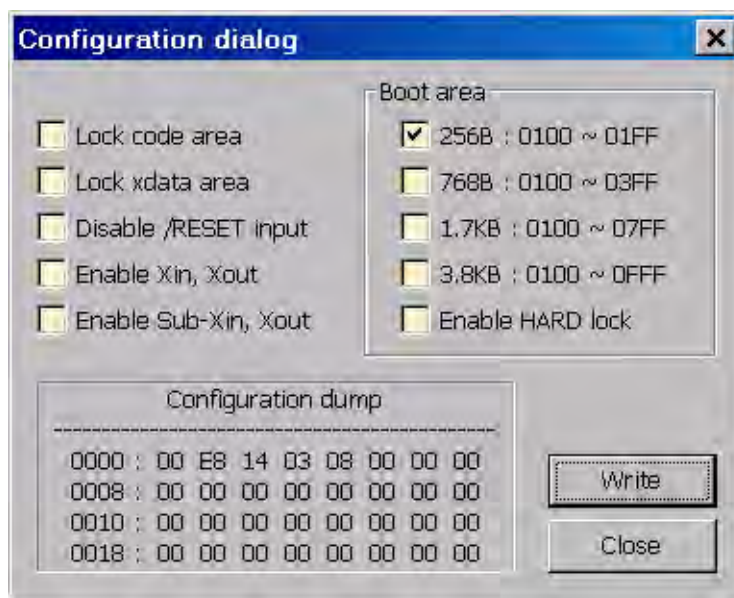


Figure 12. Configuration Dialog

- Click the **Write** button to open the On-Chip Debugger's main window. A typical OCD display is shown in Figure 13; Figure 14 shows an OCD window with child windows open.

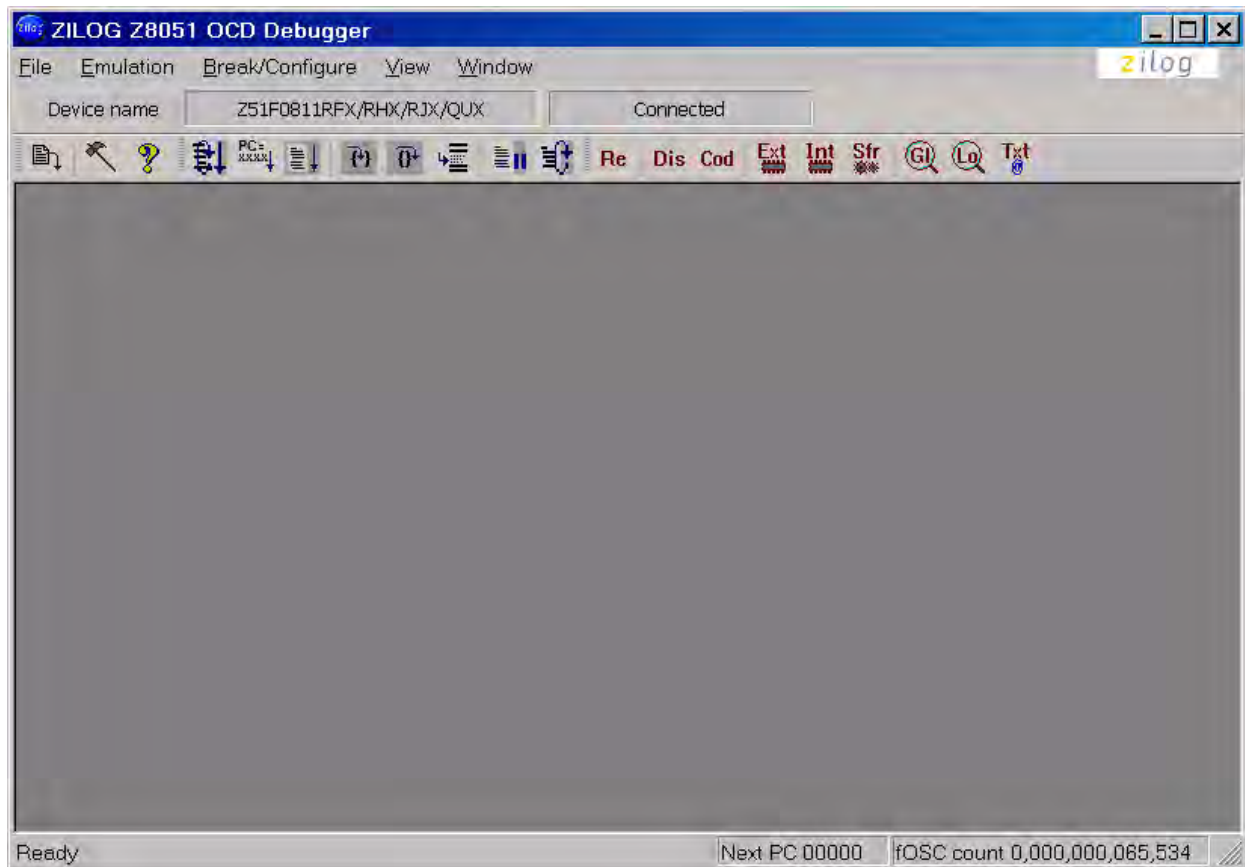


Figure 13. A Typical On-Chip Debugger Window

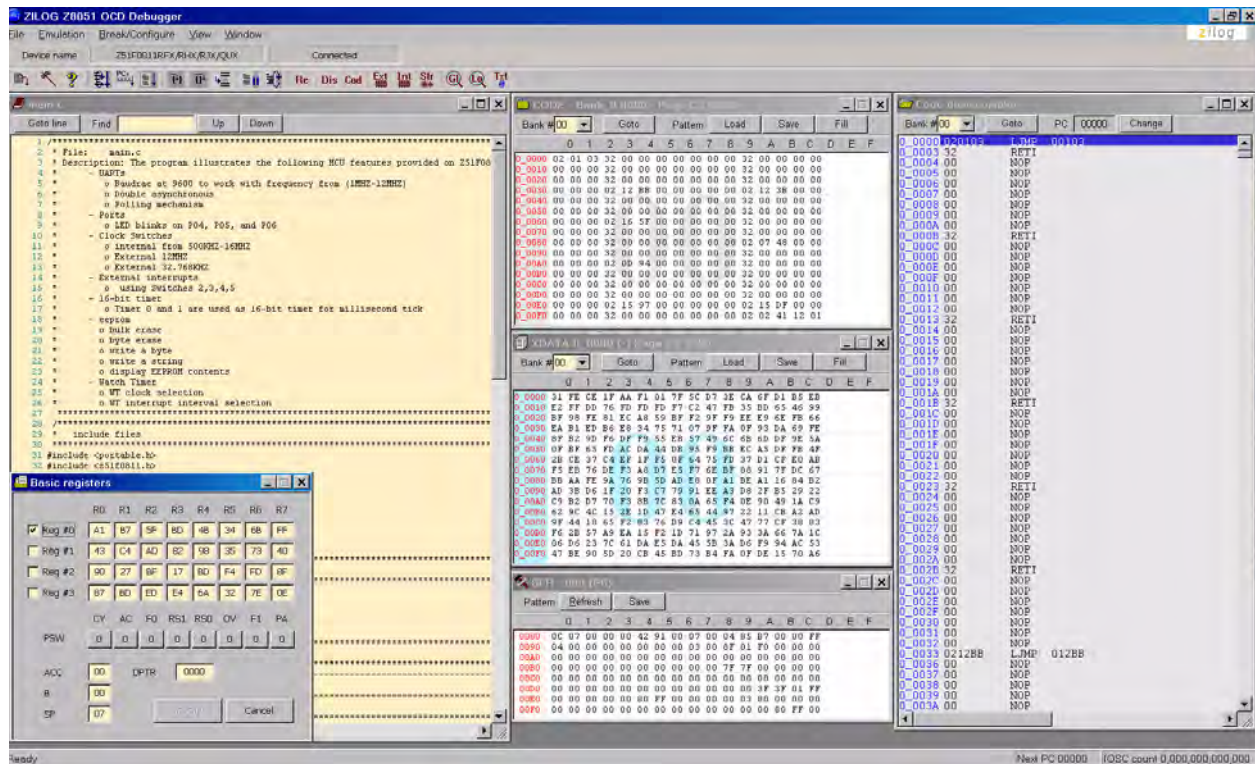


Figure 14. A Typical On-Chip Debugger with Child Windows Open

► **Note:** Use the View menu to open the child windows.

- Click the **Reset & Go** toolbar icon, shown in Figure 15. As a result, LEDs D1, D2 and D3 on the Z51F0811 Board will blink in sequence.



Figure 15. Reset & Go Toolbar Icon

► **Note:** Similar projects that you can use as references are listed in [Table 2](#) on page 21.

HyperTerminal Configuration

A communications program such as HyperTerminal can be used on Windows XP systems to view the messages from the Z51F0811 Evaluation Board. The following procedure examines how to configure HyperTerminal for the Z51F0811 demo project.

► **Note:** The HyperTerminal application is not available in Windows Vista and Windows 7 systems. If you are using either of these operating systems, consider using/installing different communication software, such as Tera Term. Please refer to the documentation for the particular emulation software you use to configure it for communication with the Z51F0811 Evaluation Board.

1. In HyperTerminal, select the COM port assigned to the USB-to-UART interface cable that is connected to the P1 connector on the Evaluation Board.

► **Note:** This COM port can be determined from the Device Manager, as described in the the [FTDI USB-to-UART Driver Installation](#) section on page 8.

2. Configure this port to reflect the following settings:
 - 9600bps
 - 8 data bits
 - No parity
 - 1 stop bit
 - No flow control
3. Click the **Call** button to connect to the Z51F0811 Board. Upon connection, you should be able to see the Demo program menu shown in Figure 16.

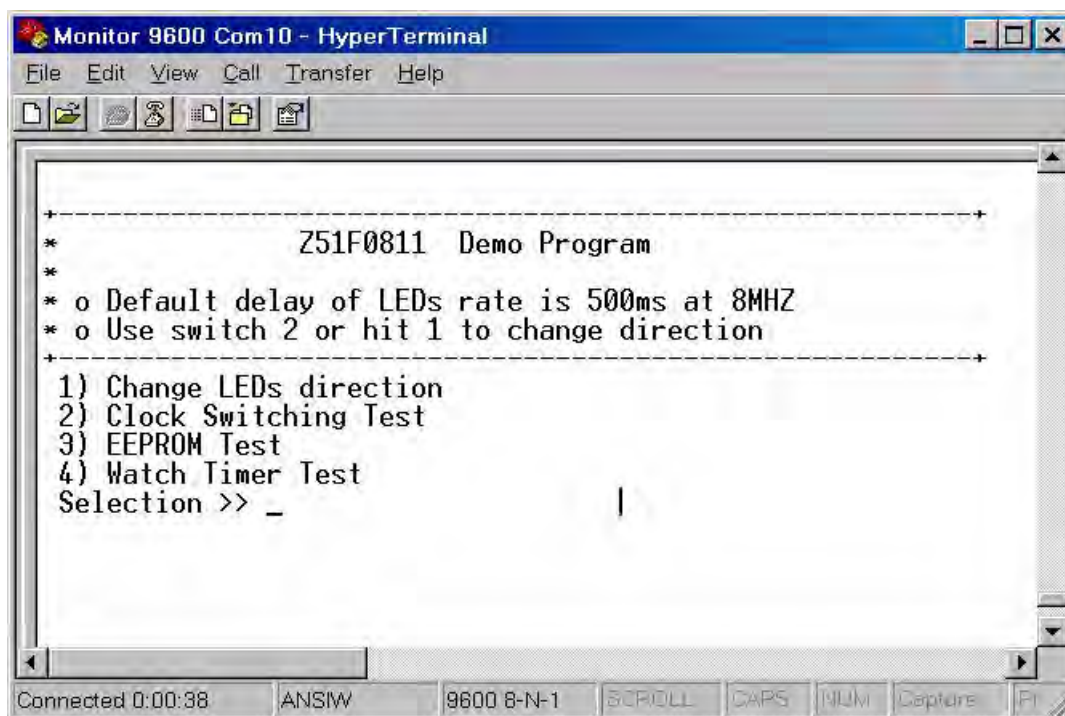


Figure 16. Demo Program Menu in HyperTerminal

At this point, you have successfully run the Z51F0811 demo project, but you are welcome to continue evaluating the demo in HyperTerminal. For additional information about how to create, edit, run and debug this project, please see the [Z8051 Tools Product User Guide \(PUG0033\)](#) and/or the [Z8051 On-Chip Debugger and In-System Programmer User Manual \(UM0240\)](#).

► **Note:** Turn off the power by removing the USB cable from the P1 connector on the Evaluation Board.

Sample Projects and Documentation

A number of sample projects are included on the CD that ships with the Z51F0811 Evaluation Kit, and their locations, listed in Table 2, will be accessible upon installation.

Table 2. Z51F0811 Evaluation Kit Sample Projects

Description	Location
Demo	samples\Z51F0811\Demo
Led Blink	samples\Z51F0811\Led_Blink samples\Z51F0811\Led_Blink_Asm
Timer 0	samples\Z51F0811\Timers\Timer0
Timer 1	samples\Z51F0811\Timers\Timer1
Timer 2	samples\Z51F0811\Timers\Timer2
Timer 3	samples\Z51F0811\Timers\Timer3
Timer 4	samples\Z51F0811\Timers\Timer4
Timer 01	samples\Z51F0811\Timers\Timer_01_16bit
Timer 23	samples\Z51F0811\Timers\Timer_23_16bit

A number of Z8051-related documents are included in the Z51F0811 Evaluation Kit, and their locations, listed in Table 3, will be accessible upon installation. You can also find current versions of each of these documents on the [Zilog website](#).

Table 3. Z51F0811 Evaluation Kit Documentation

Description	Document	Location
Z51F0410 Product Specification	PS0295	Documentation\Chip_Documentation
Z51F0811 Product Specification	PS0296	Documentation\Chip_Documentation
Z51F3220 Product Specification	PS0299	Documentation\Chip_Documentation
Z51F3221 Product Specification	PS0300	Documentation\Chip_Documentation
Z51F6412 Product Specification	PS0303	Documentation\Chip_Documentation
Z51F0410 Product Brief	PB0237	Documentation\Chip_Documentation
Z51F0811 Product Brief	PB0238	Documentation\Chip_Documentation
Z51F3220 Product Brief	PB0239	Documentation\Chip_Documentation
Z51F3221 Product Brief	PB0240	Documentation\Chip_Documentation

Table 3. Z51F0811 Evaluation Kit Documentation (Continued)

Description	Document	Location
Z51F6412 Product Brief	PB0241	Documentation\Chip_Documentation
Z8051 OCD and ISP User Manual	UM0240	Documentation\Tools_Documentation
Z51F0811 Evaluation Kit User Manual	UM0242	Documentation\Tools_Documentation
Z51F3220 Development Kit User Manual	UM0243	Documentation\Tools_Documentation
Z8051 Tools Product User Guide	PUG0033	Documentation\Tools_Documentation

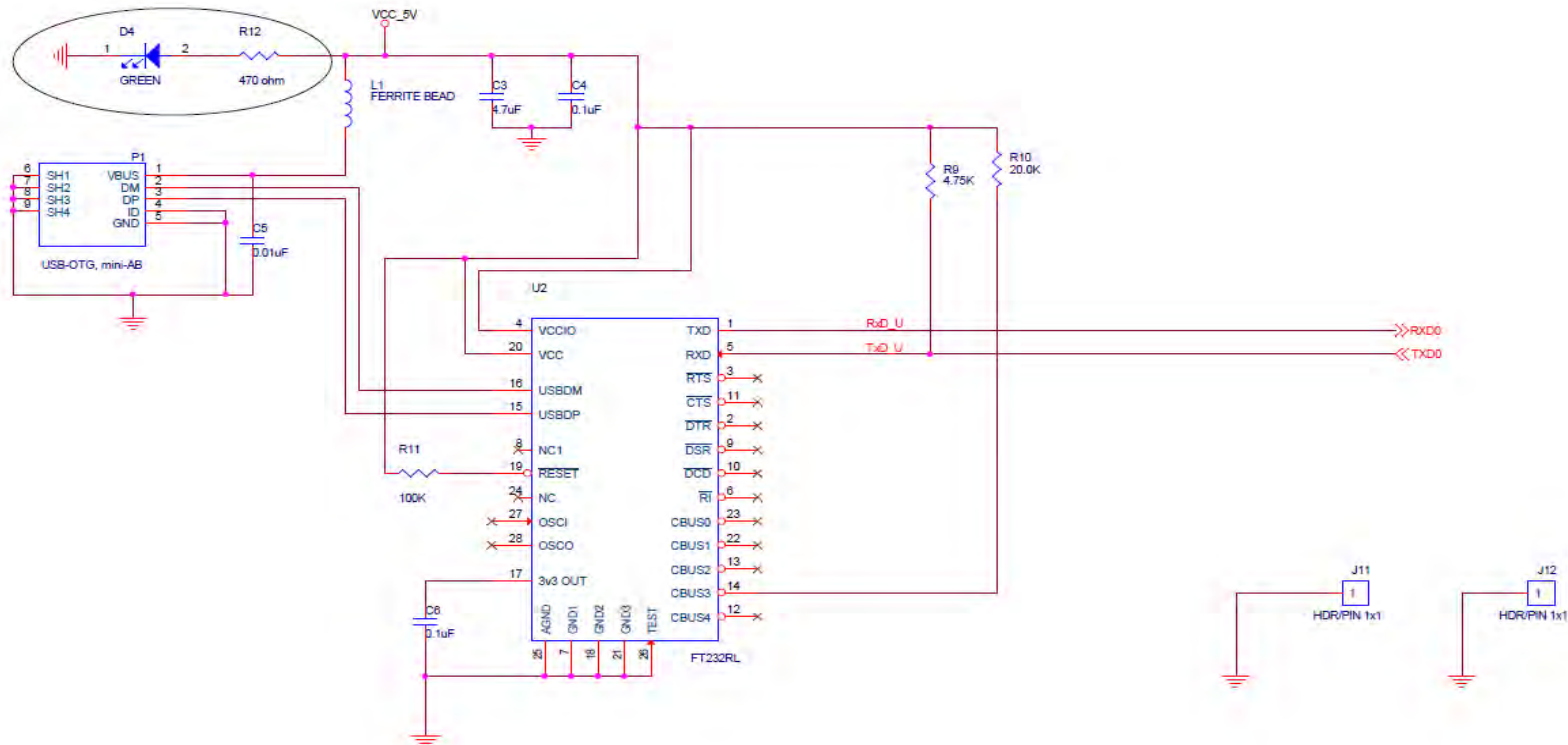


Figure 18. Z51F0811 Evaluation Board, #2 of 2

Appendix A. OCD Driver Installation on Windows Vista Systems

The driver programs for the Z8051 On-Chip Debugger are copied to the development PC during the software and documentation installation. In the following procedure for PCs running Windows Vista 32- and 64-bit operating systems, ensure that the target side of the OCD will remain unconnected while you install these drivers. Refer to [Figure 4](#) on page 6 for guidance.

1. Connect the OCD hardware to the USB port of your PC by connecting the A (male) end of one of the two USB A (male)-to-Mini-B cables with the development PC's USB port. Connect the Mini-B end to the OCD device.
2. After the PC detects the new hardware, it will display the Found New Hardware Wizard dialog box, shown in Figure 19. Click **Locate and install driver software (recommended)**.

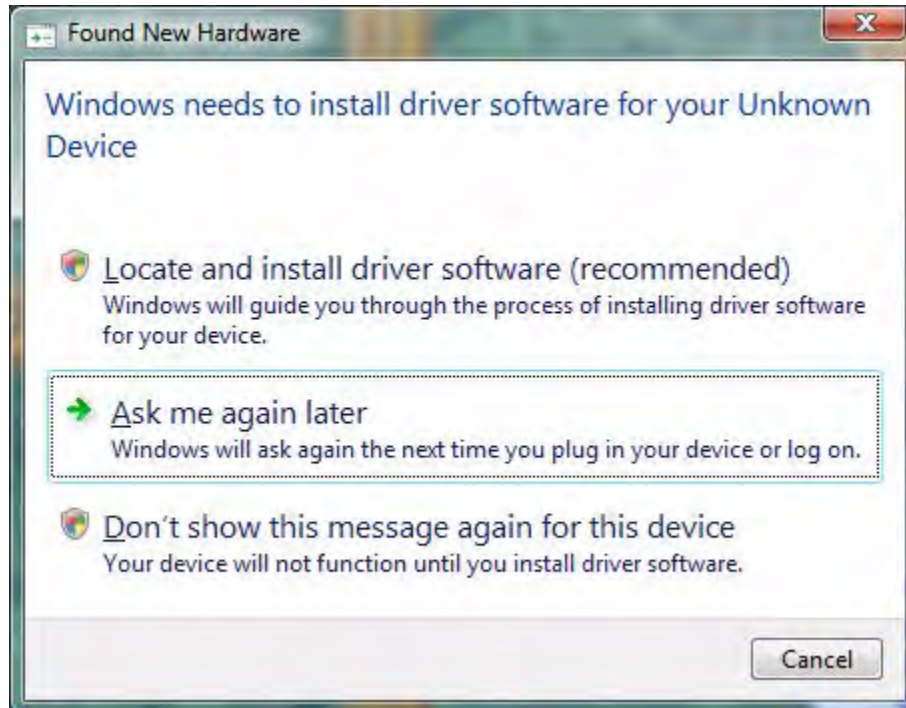


Figure 19. Found New Hardware Dialog, Windows Vista

3. Depending on your development PC's User Account Control settings, Windows may ask for permission to continue the installation. Click **Continue**.
4. When the **Insert the Disc** dialog appears, as shown in Figure 20, select **I don't have the disc. Show me other options**. Click the **Next** button to display the dialog that follows, which is shown in Figure 21.



Figure 20. Install Device Driver Dialog, Windows Vista

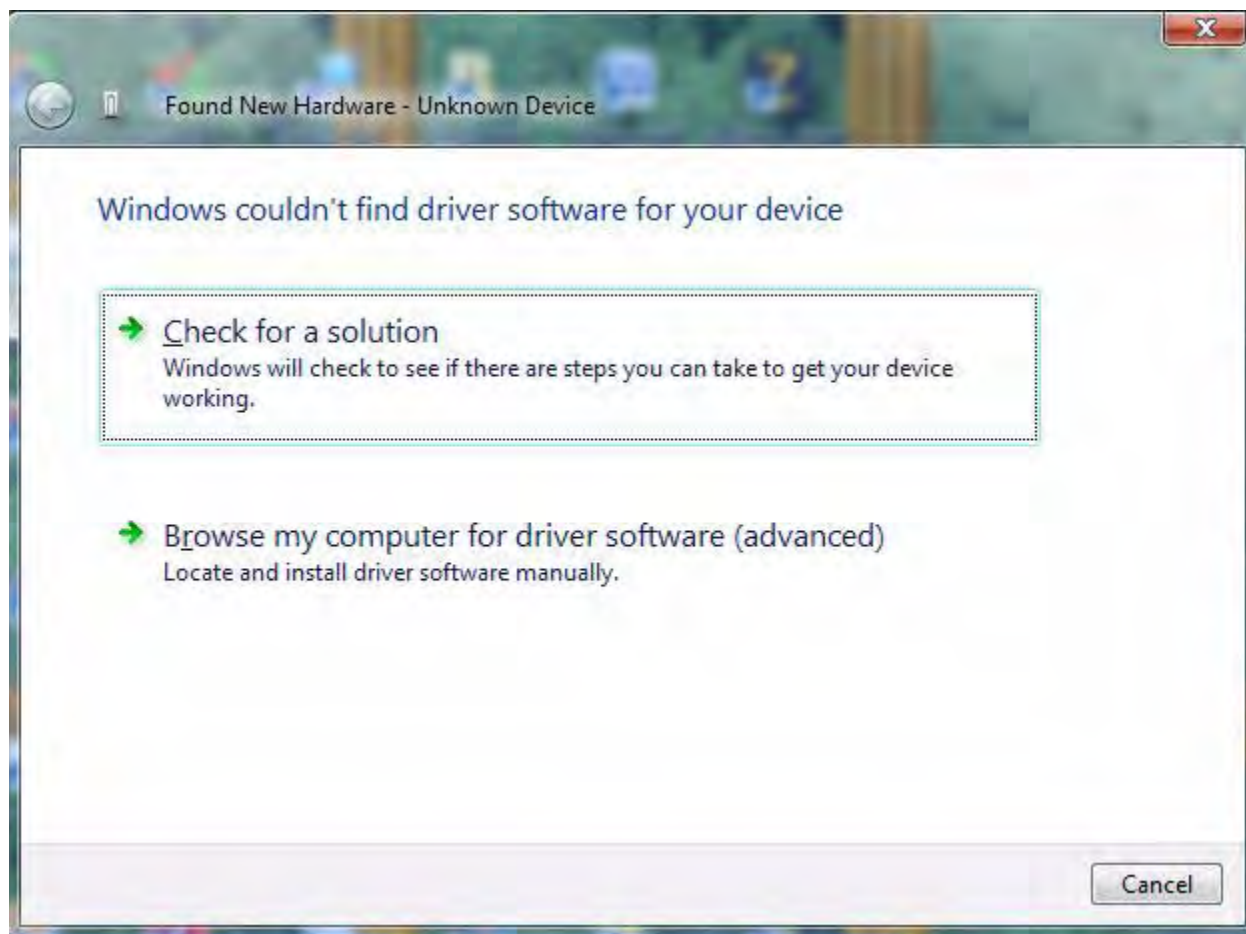


Figure 21. Couldn't Find Driver Dialog, Windows Vista

5. Select **Browse my computer for driver software (advanced)** to display the dialog shown in Figure 22, which prompts you to key in or browse for the location of the .inf file. Depending on the type of computer you use (32-bit or 64-bit), use the **Browse** button to navigate to one of the following paths, then click the **Next** button.
 - On 32-bit machines, use the following path:
<Z8051 Installation>\Z8051_<version_number>\device drivers\OCD USB\x32
 - On 64-bit machines, use the following path:
<Z8051 Installation>\Z8051_<version_number>\device drivers\OCD USB\x64

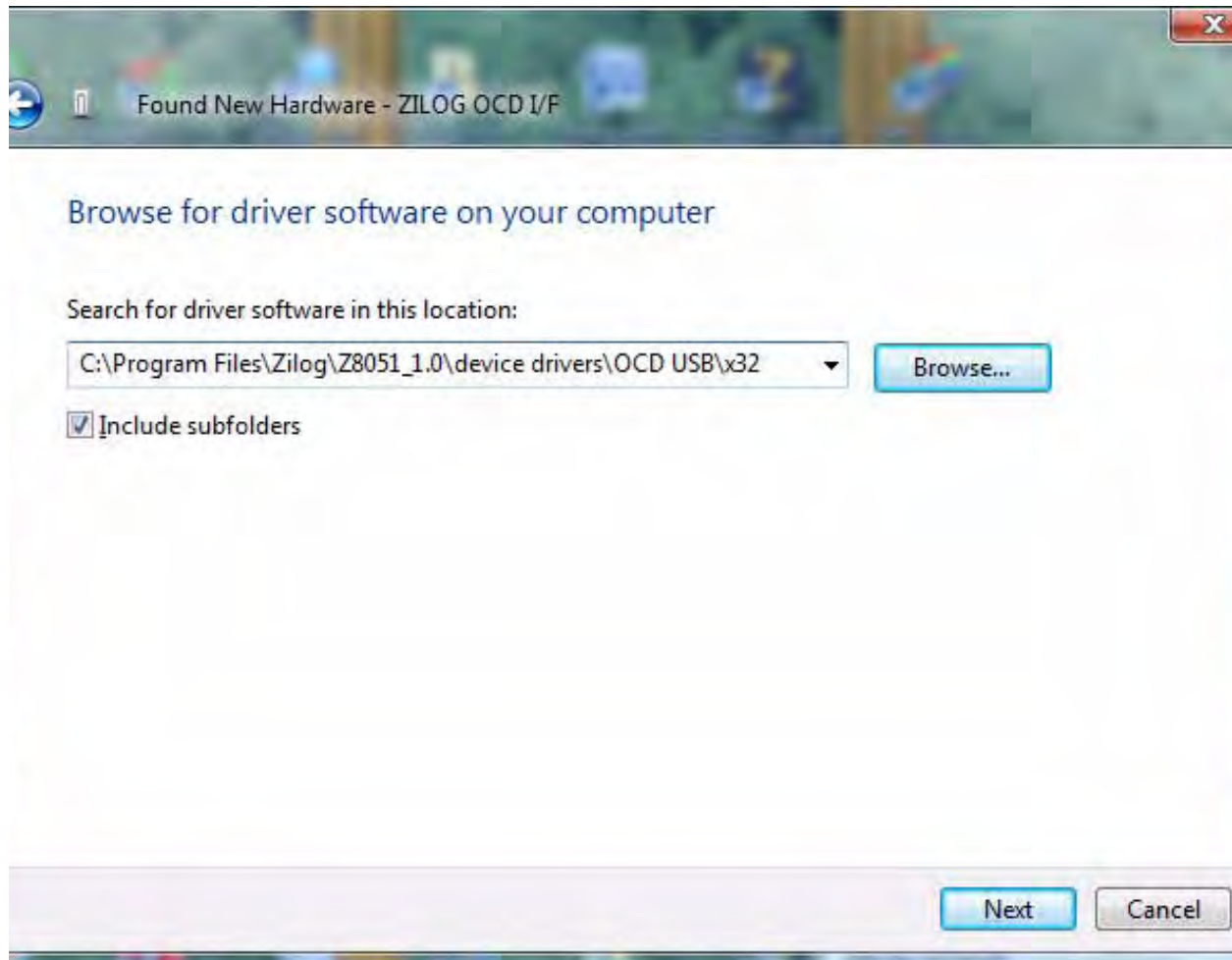


Figure 22. Browse For Driver Dialog, Windows Vista

6. When Windows prompts you whether to install or not install, click **Install this driver software anyway** and wait until the installation is completed (Windows may prompt you more than once).



Figure 23. Can't Verify Publisher Dialog, Windows Vista

7. When the installation is complete, the screen shown in Figure 24 will appear. Click **Close** to exit the OCD driver installation.

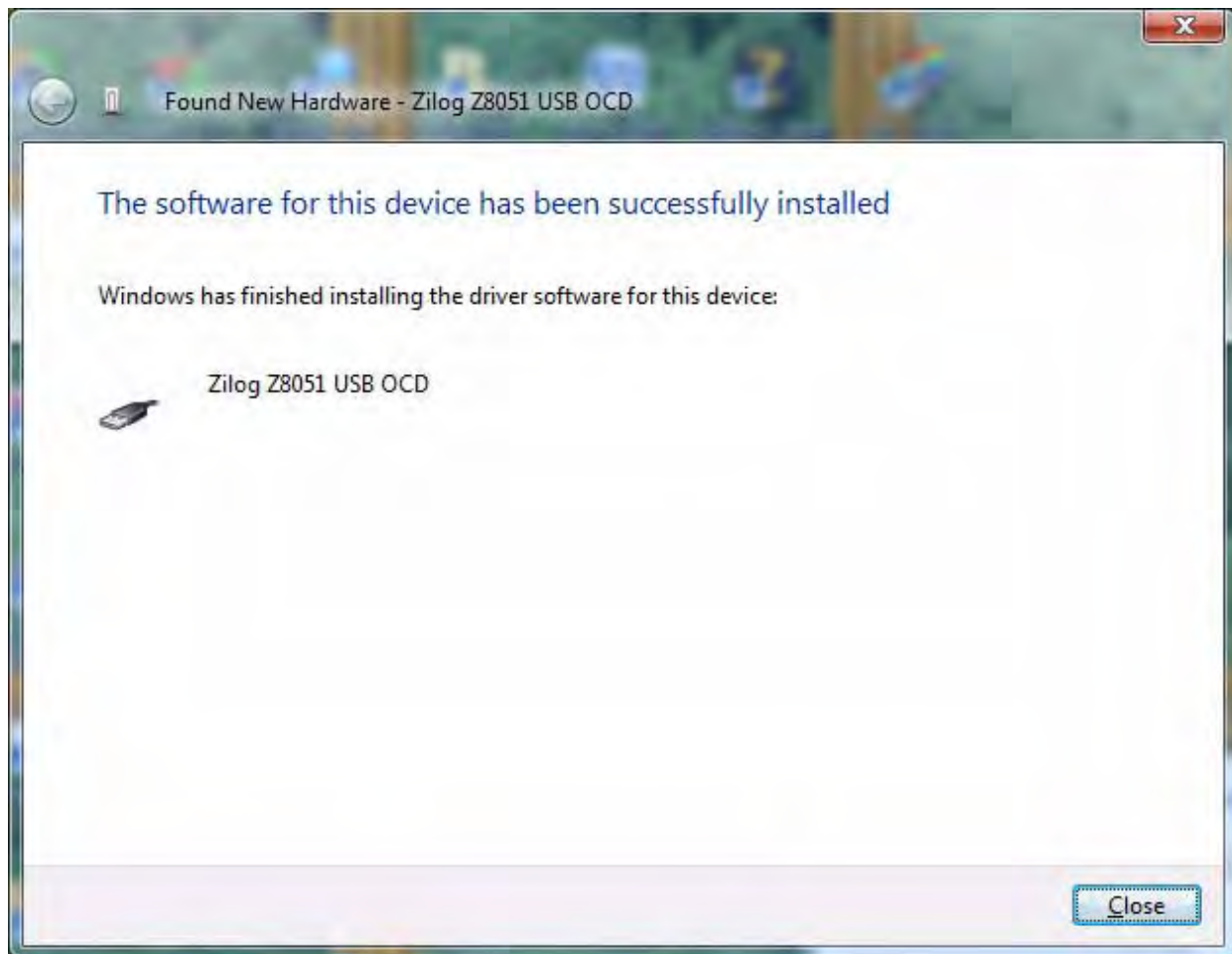


Figure 24. Successfully Installed Dialog, Windows Vista

► **Note:** On some installations, the Found New Hardware screen shown in Figure 24 may also display the text string, Zilog Z8051 USB OCD - No Firmware. This occurrence is normal and can be disregarded.

Appendix B. OCD Driver Installation on Windows 7 Systems

The driver programs for the Z8051 On-Chip Debugger are copied during the software and documentation installation. In the following procedure for PCs running Windows 7 32- and 64-bit operating systems, ensure that the target side of the OCD will remain unconnected while you install these drivers.

1. Connect the OCD hardware to the USB port of your PC by connecting the A (male) end of one of the two USB A (male)-to-Mini-B cables with the host PC's USB port. Connect the Mini-B end to the OCD device.
2. After the PC detects the new hardware, it will display the *Installing device driver software* dialog shown in Figure 25.

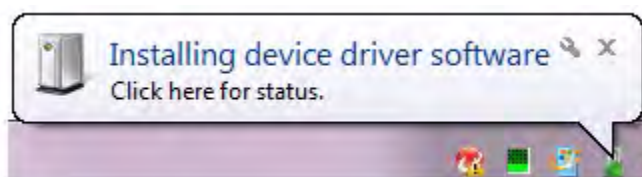


Figure 25. Install Device Driver Dialog, Windows 7

3. If you should encounter the scenarios shown in Figures 26 or 27, right-click your mouse on **ZILOG OCD I/F** (highlighted in Figure 26) or **Unknown device** (highlighted in Figure 27) and select **Update Drive Software...**
4. Follow [Steps 5 through 7](#) in [Appendix A](#) on page 25 to complete the driver installation.

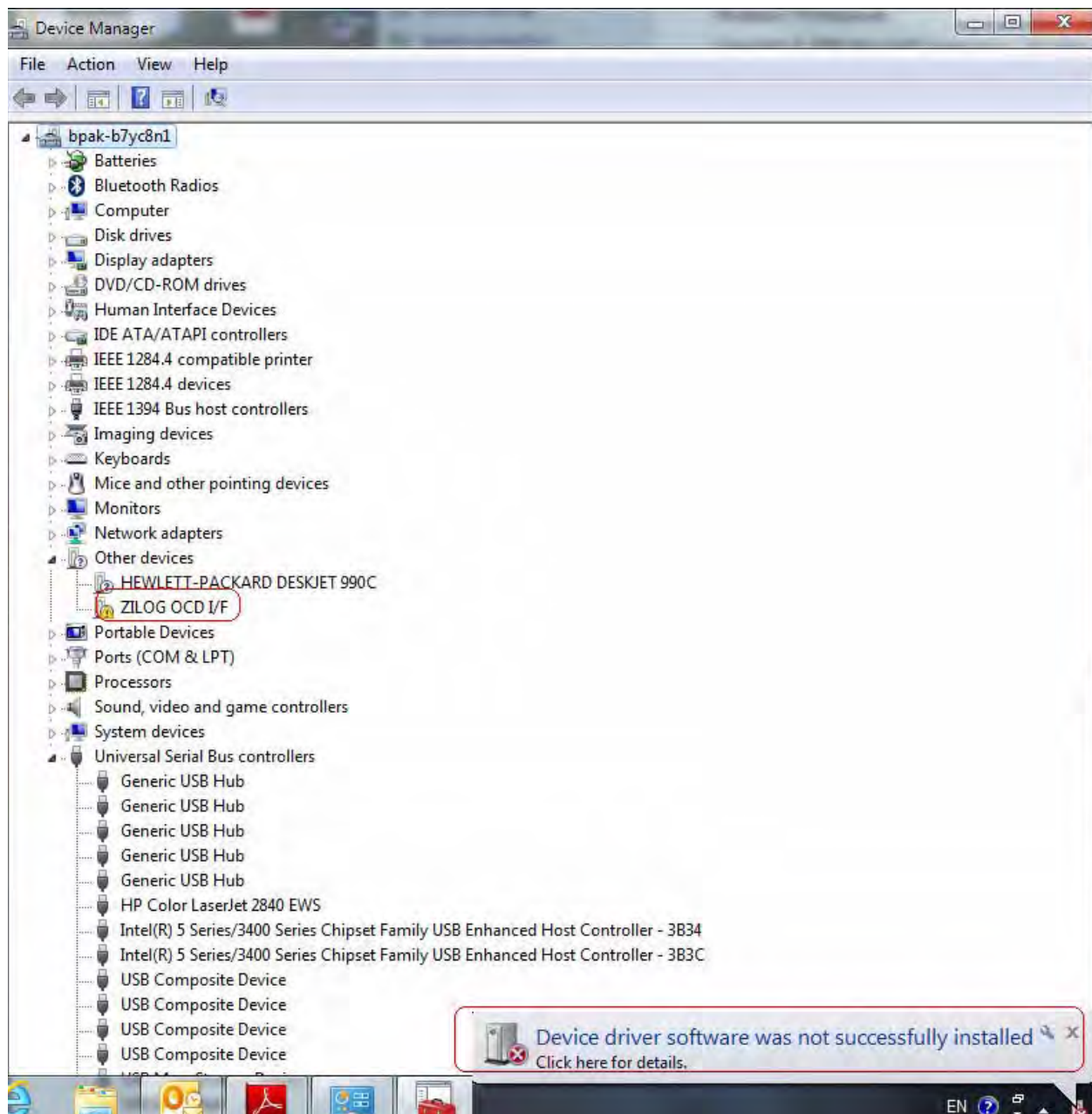


Figure 26. Unsuccessful Installation, Scenario 1

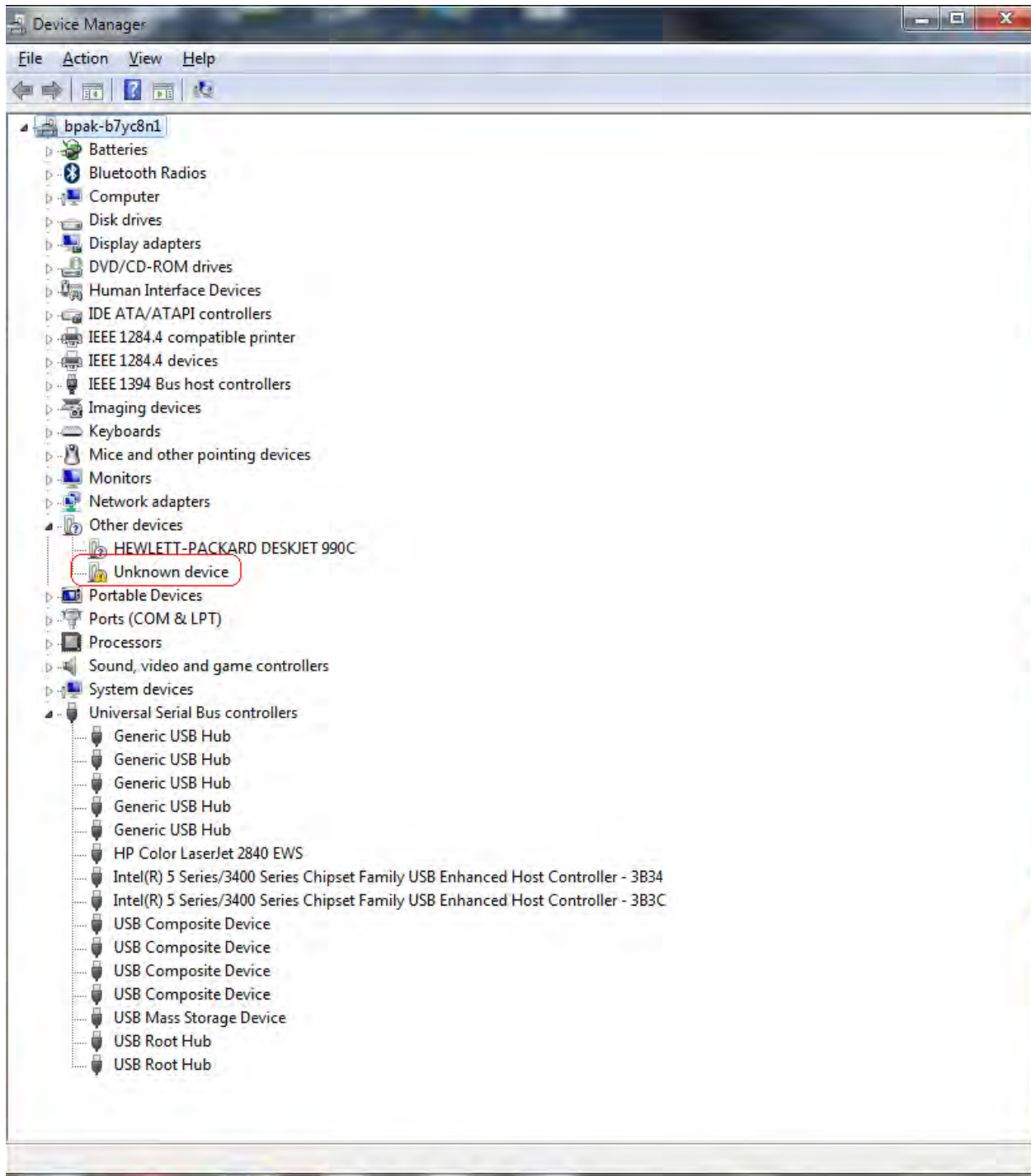


Figure 27. Unsuccessful Installation, Scenario 2

5. If *Zilog Z8051 USB OCD* appears in the Device Manager (as highlighted in Figure 28), the OCD driver software has been successfully installed.

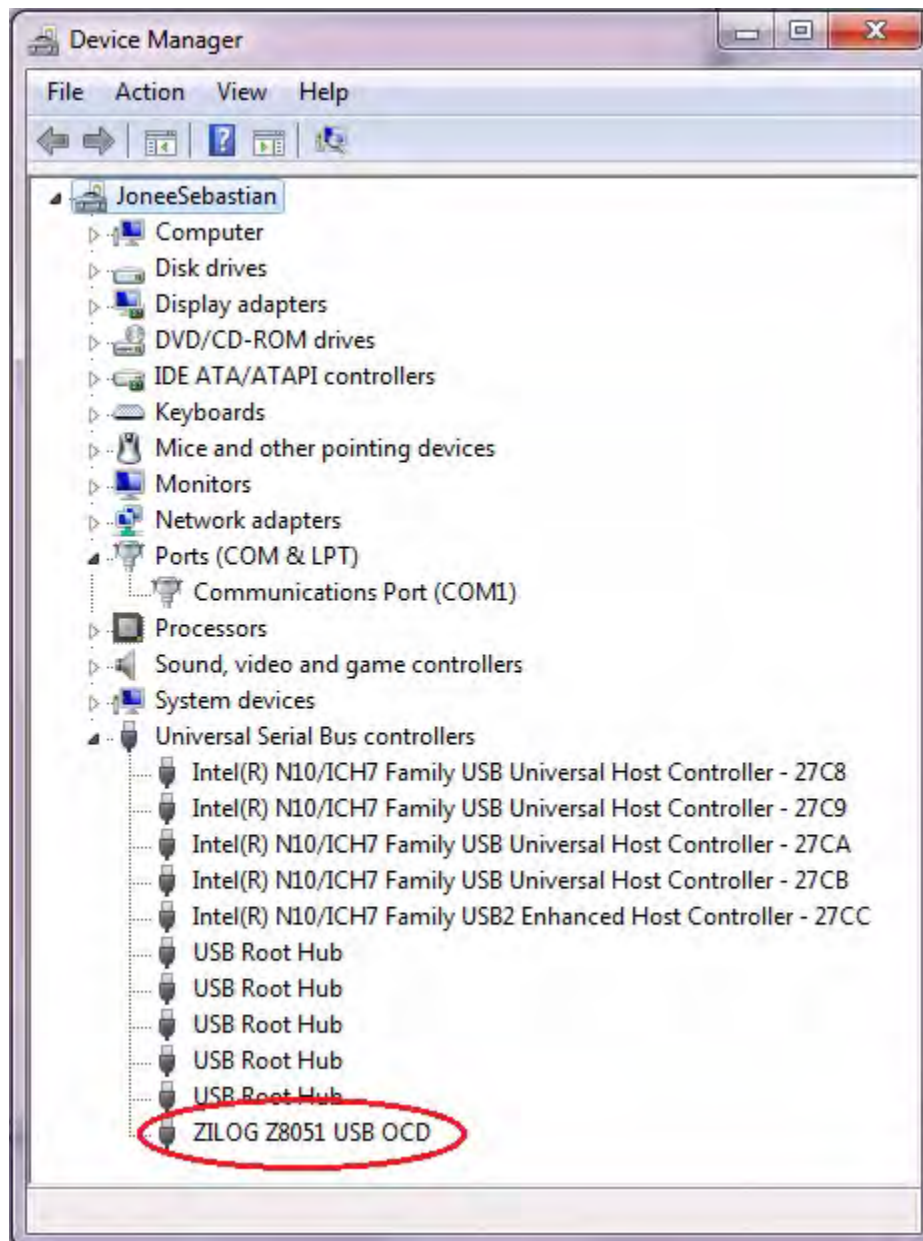


Figure 28. Device Manager Dialog, Windows 7

Customer Support

To share comments, get your technical questions answered, or report issues you may be experiencing with our products, please visit Zilog's Technical Support page at <http://support.zilog.com>.

To learn more about this product, find additional documentation, or to discover other facets about Zilog product offerings, please visit the [Zilog Knowledge Base](#) or consider participating in the [Zilog Forum](#).

This publication is subject to replacement by a later edition. To determine whether a later edition exists, please visit the Zilog website at <http://www.zilog.com>.